

TEST REPORT NO:168464

CUSTOMER: SAFESTAND LTD

DATE OF TEST:11.09.2008

ORDER NO: VERBAL BRIAN

INTRODUCTION:

A 4 metre set of Surestand Access System was set up complete with boarded platform, toe board and handrails. They were submitted for testing for compliance to BS EN 13374: 2004, temporary edge protection system, class A NO STABILISERS WERE FITTED TO SYSTEM.

SURESTAND BATCH NO: SSC 08 07 (JULY 2008)

PROCEDURE:

A 4 metre run of the Surestand Access System was set up in accordance with the manufacturers instructions. 4 number stands were set at 1200 mm intervals, 4 number scaffold boards were utilised to create the platform, a single scaffold board was used to create a toe board and 16 number guardrails were installed in locating sockets. Tests were conducted without counterbalance or stabilisers.

RESULTS:

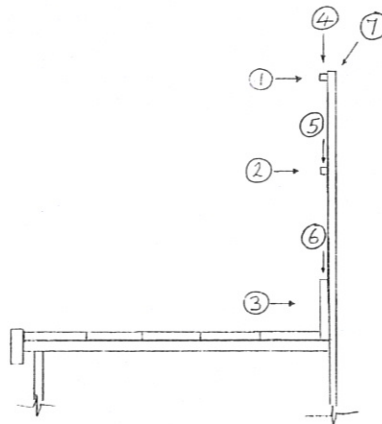


TABLE WITHOUT COUNTERBALANCE.

LOAD	REQUIREMENTS	ACTUAL	COMMENT
1	0.3KN (MAX .55MM DEFLECTION)	0.4 KN	55 MM DEFLECTION
2	0.3 KN (MAX .55MM DEFLECTION)	0.42 KN	55 MM DEFLECTION
3	0.2 KN (MAX .55MM DEFLECTION)	0.64 KN	55 MM DEFLECTION
4	1.25 KN	2.5 KN	NO sign of deflection
5	1.25 KN	2.5 KN	NO sign of deflection
6	1.25 KN	2.5 KN	NO sign of deflection
7	0.2 KN	2. KN	NO sign of deflection

NOTE:

All required loadings were achieved without tipping/ uplift. No permanent set or deformation occurred on any part of the system tested.

CONCLUSION:

The safe stand access system tested surpasses all requirements of BS EN 13374: 2004 and subject to specification conformity is issued with LLOYDS BRITISH stamp of approval.

S.P. FOX
TEST MANAGER

SAFESTAND ACCESS SYSTEMS
38A FOURTH WAY
WEMBLEY
MIDDLESEX
HA9 0LH



LLOYDS BRITISH TESTING LTD, ALBION ROAD, WEST BROMWICH, WEST MIDLANDS B70 8AX
TEL: 0870 609 9140 FAX: 0870 609 9141
E.MAIL: WESTBROMWICH@LLOYDSBRITISH.COM WWW.LLOYDSBRITISH.COM
REG NO. 4444099

